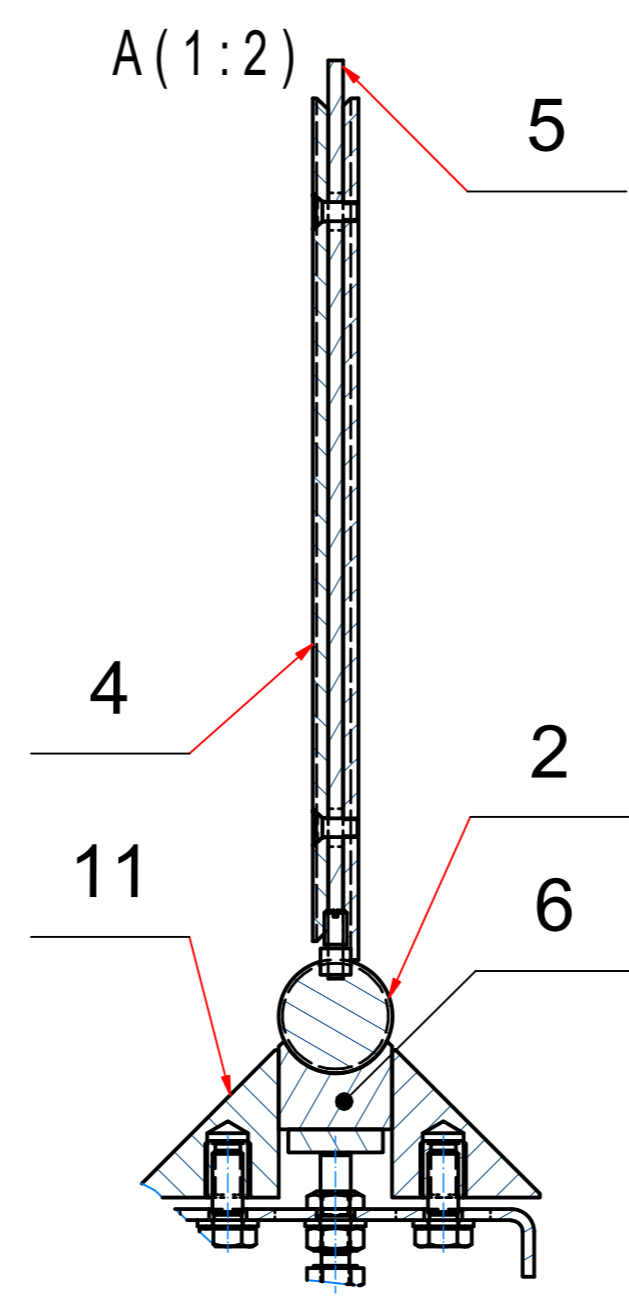
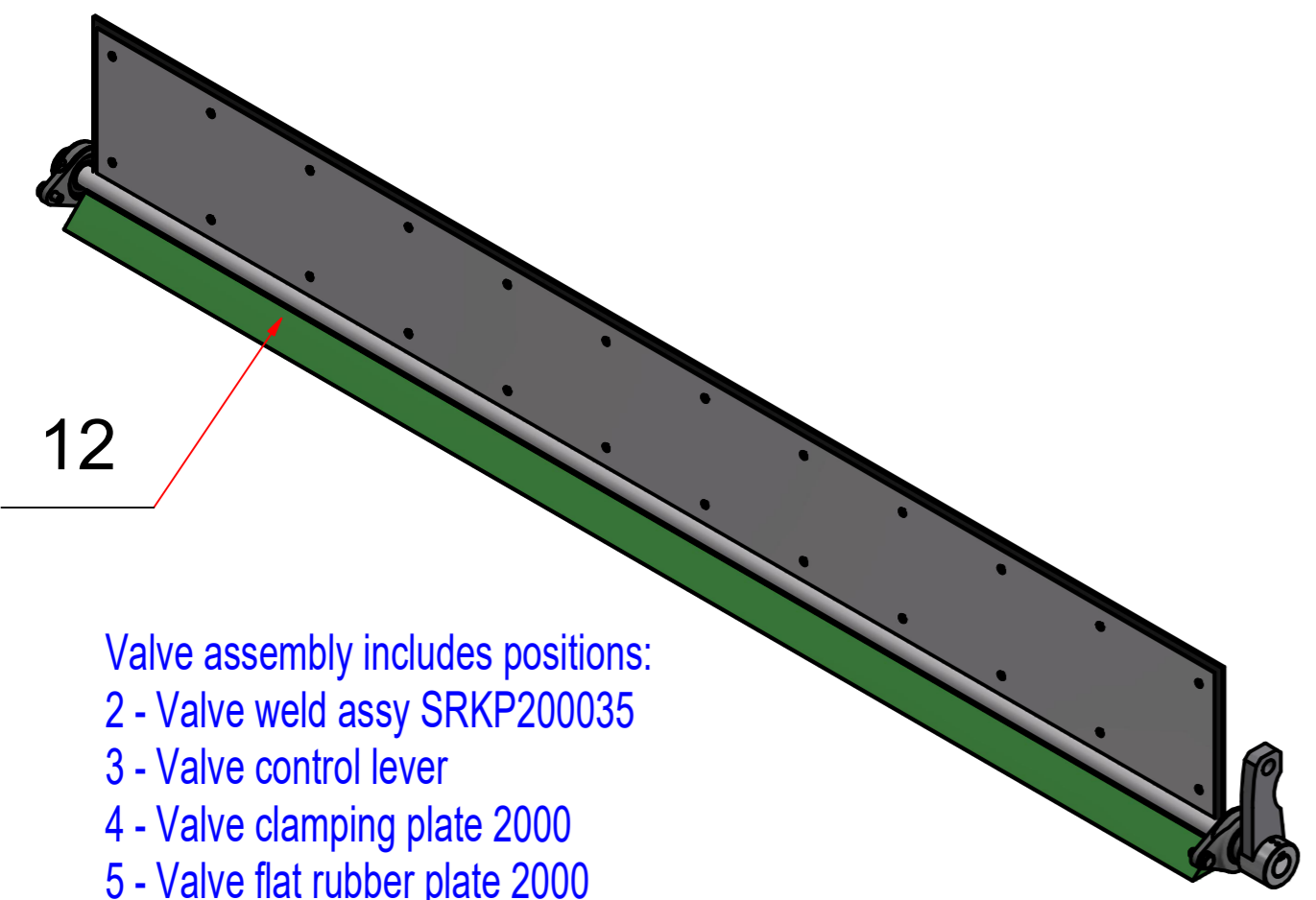
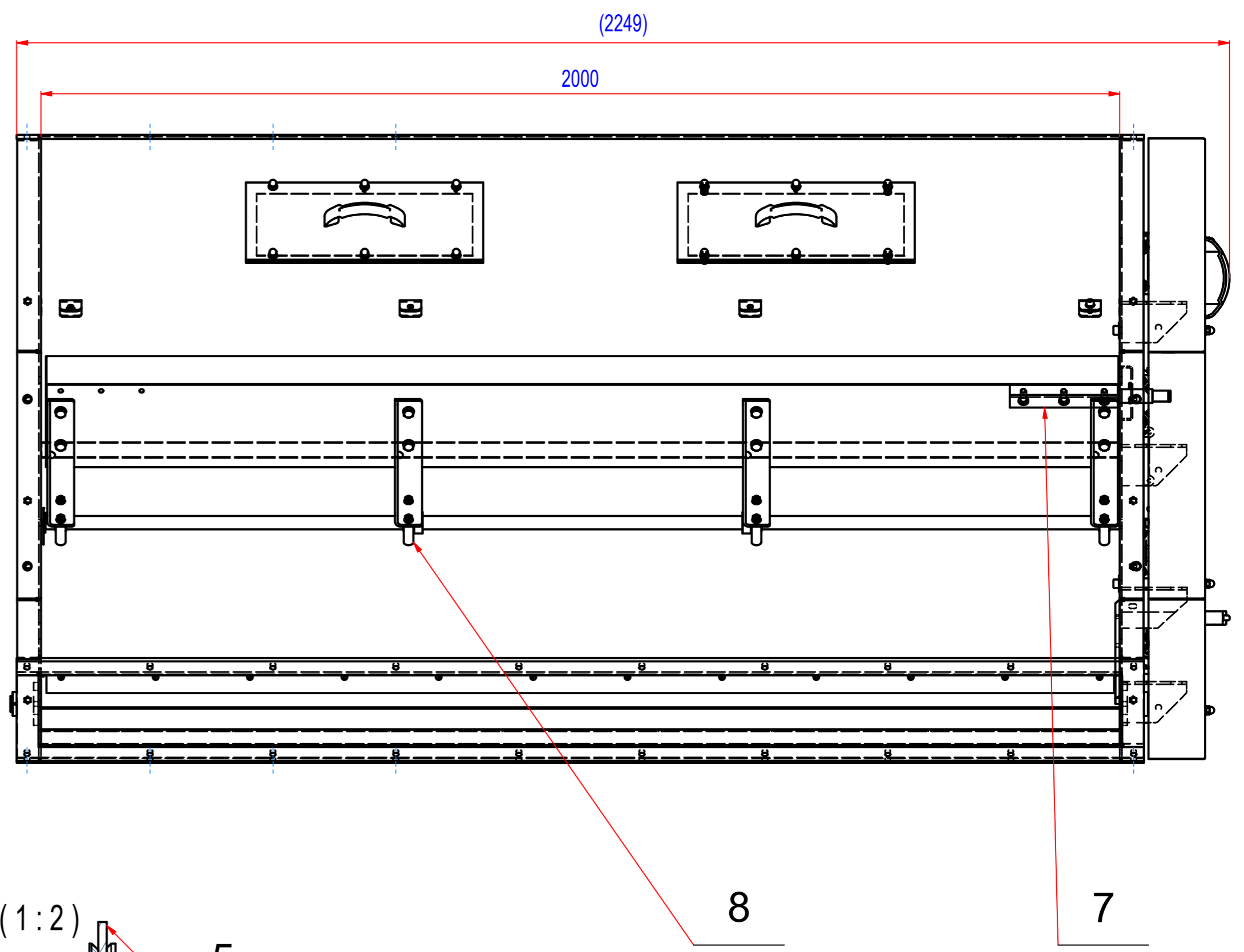
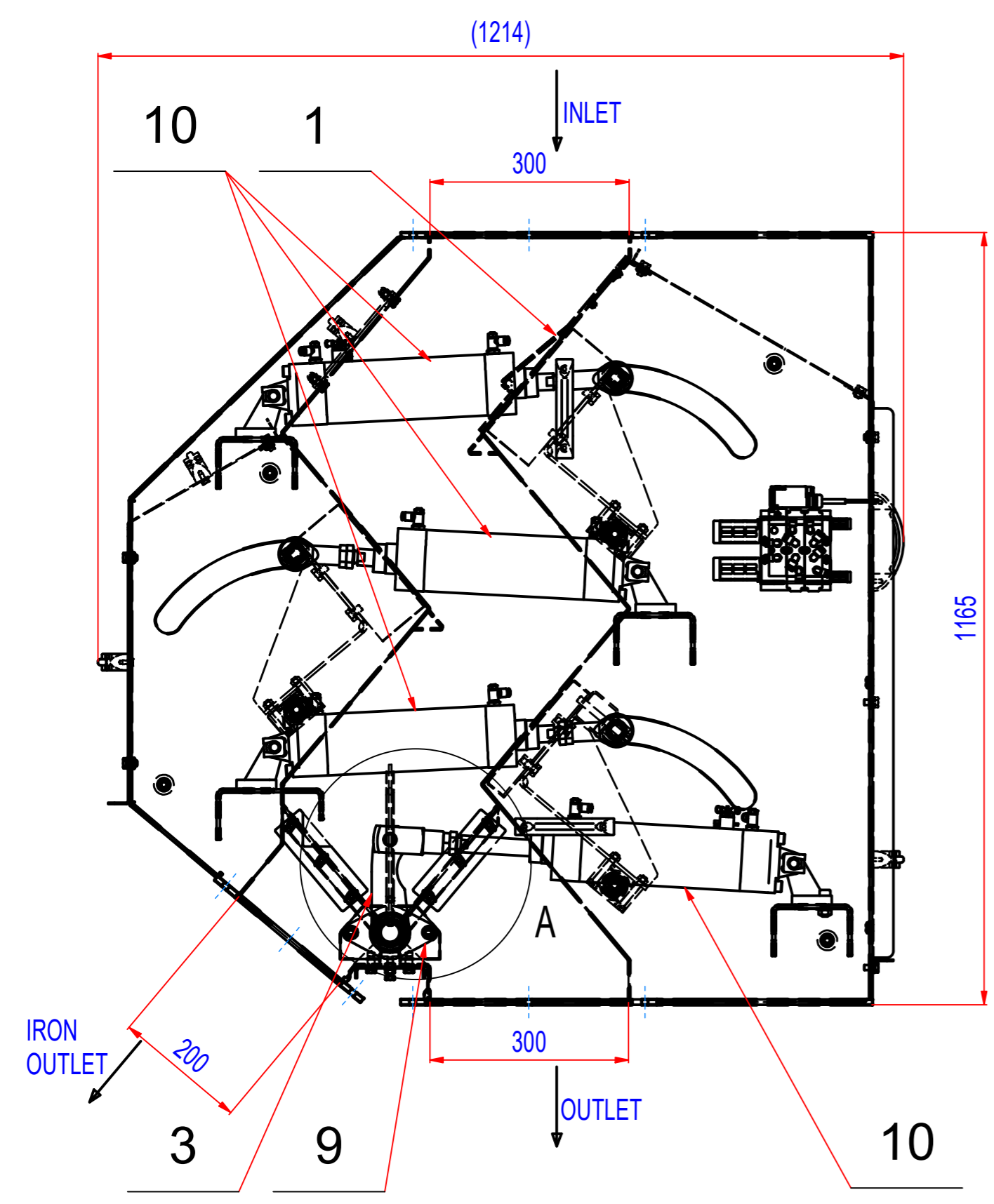


REV	DATE	BY	DESCRIPTION
-	04.06.2021	EN	Original drawing



- Valve assembly includes positions:
- 2 - Valve weld assy SRKP200035
  - 3 - Valve control lever
  - 4 - Valve clamping plate 2000
  - 5 - Valve flat rubber plate 2000
  - 6 - Valve axle support 2000
  - 9 - Bearings assembly PCFT 30
  - 11 - Valve side slat

POZ.	Č. SOUČÁSTI	POPIS	MATERIÁL	HMOT.	MN.
12	A902_050200	Valve assembly		50	1
11	P41_040301	Valve side slat 2000		2,4	2
10	1463495	Cylinder FESTO DSBC-80-200-PPSA-N3EX4		4,5	4
9	15_4100206	Bearings assembly PCFT 30		0,9	2
8	15_9000066	Bearings assembly ESTM-25		0	12
7	P41_020001	Axle for moving magnet 2000		1,7	3
6	P41_040003	Valve axle support 2000		1,7	1
5	P41_040002	Valve flat PUR plate 2000		1,8	1
4	P41_040001	Valve clamping plate 2000	AISI304	14	1
3	A902_040200	Valve control lever 2000		1,7	1
2	A902_040100	Valve weld assy SRKP200035		19,6	1
1	A902_06000	Wedge plate for SRKP200035 - divided	AISI304	19,2	1

Sheet: A2 Drawn: EN Date: 04.06.2021 Predecessor: SRKP150035w Quick search: XSKP Description: Spare parts for cascade magnet pneumatic, 3 steps, W2000	Extra info: Weight (kg): 787,7  <small>© All rights reserved. Reproduction is not permitted without written permission of GOUDSMIT Magnetic Systems BV</small>	General tolerance: ISO 2768 - cL Drawn according: ISO268; ISO1101; ISO2553 Status: Customer reference number: Product key: SEK-P-2000-3-FN-DC-Ex Part number: SRKP200035_SP Rev: -
---	---	--