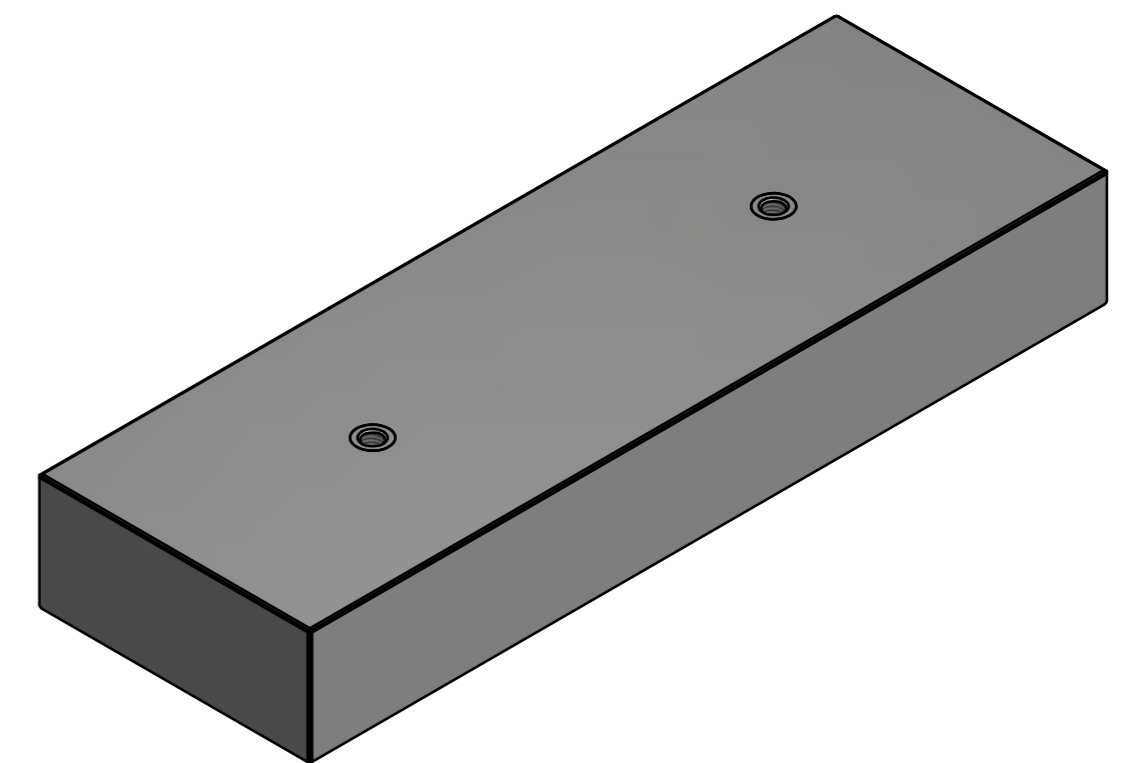
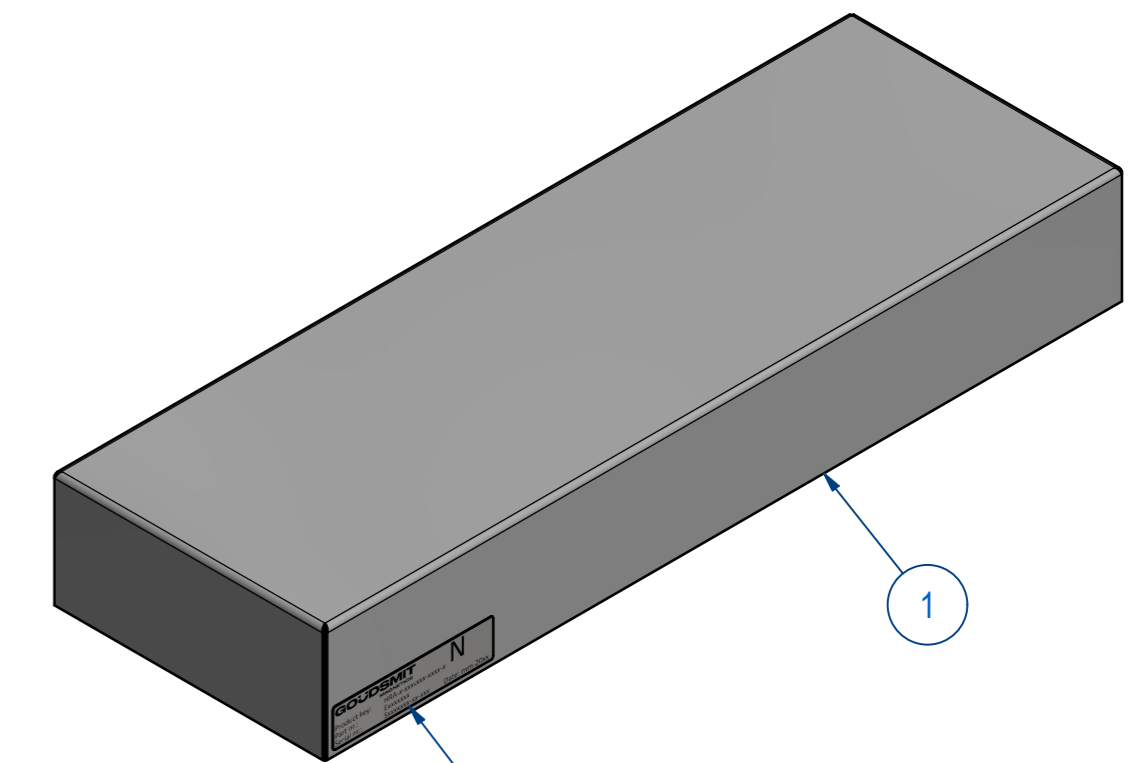
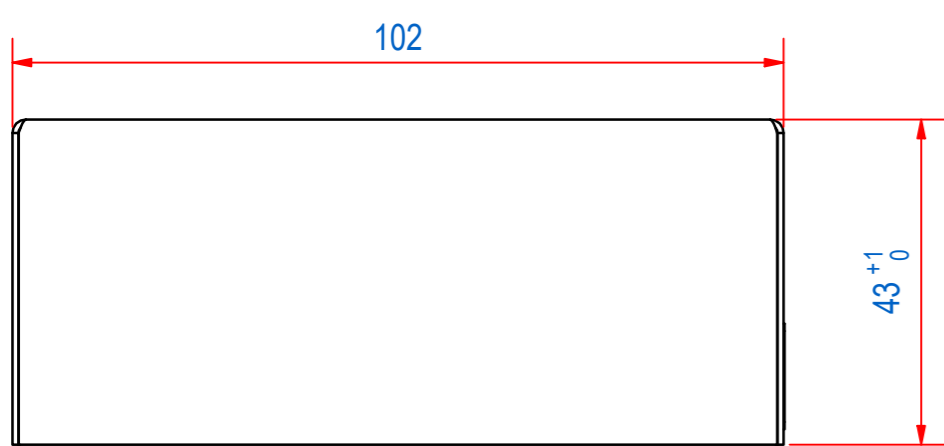
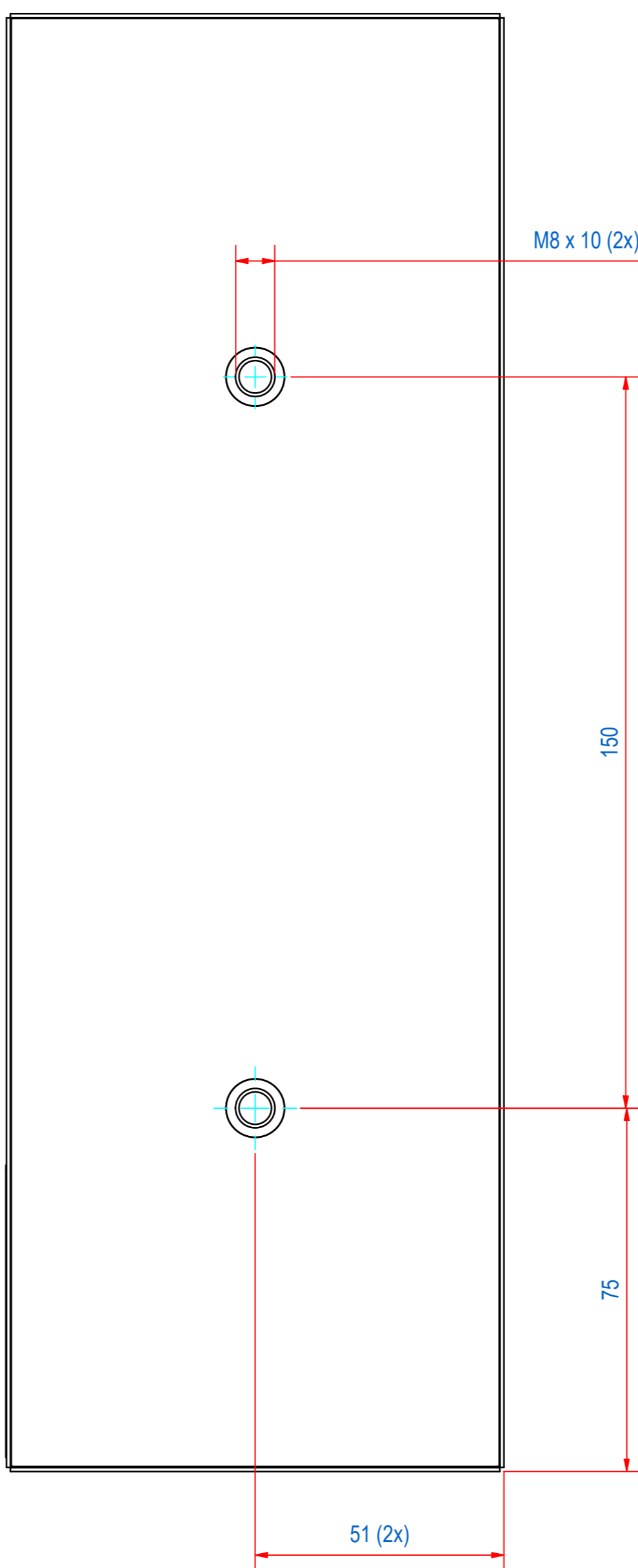
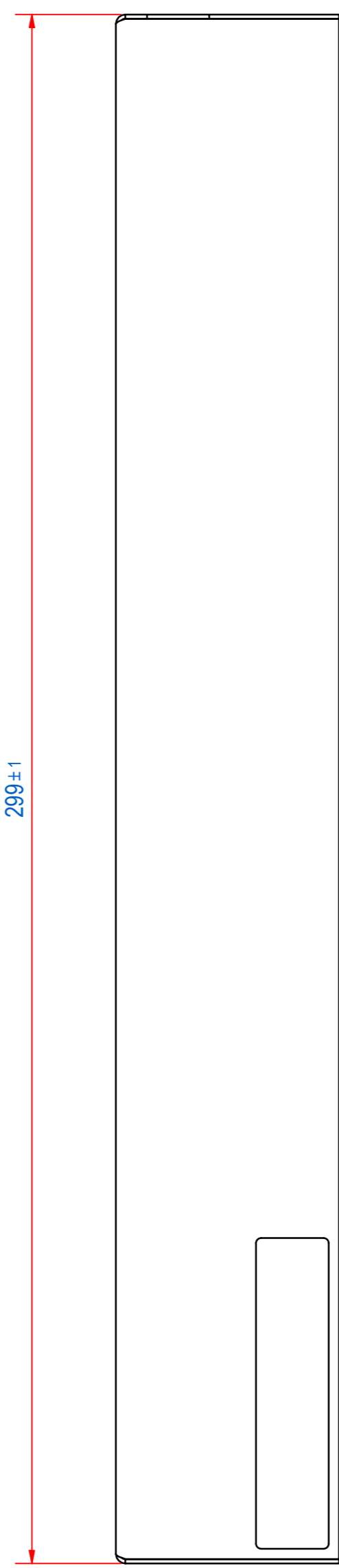
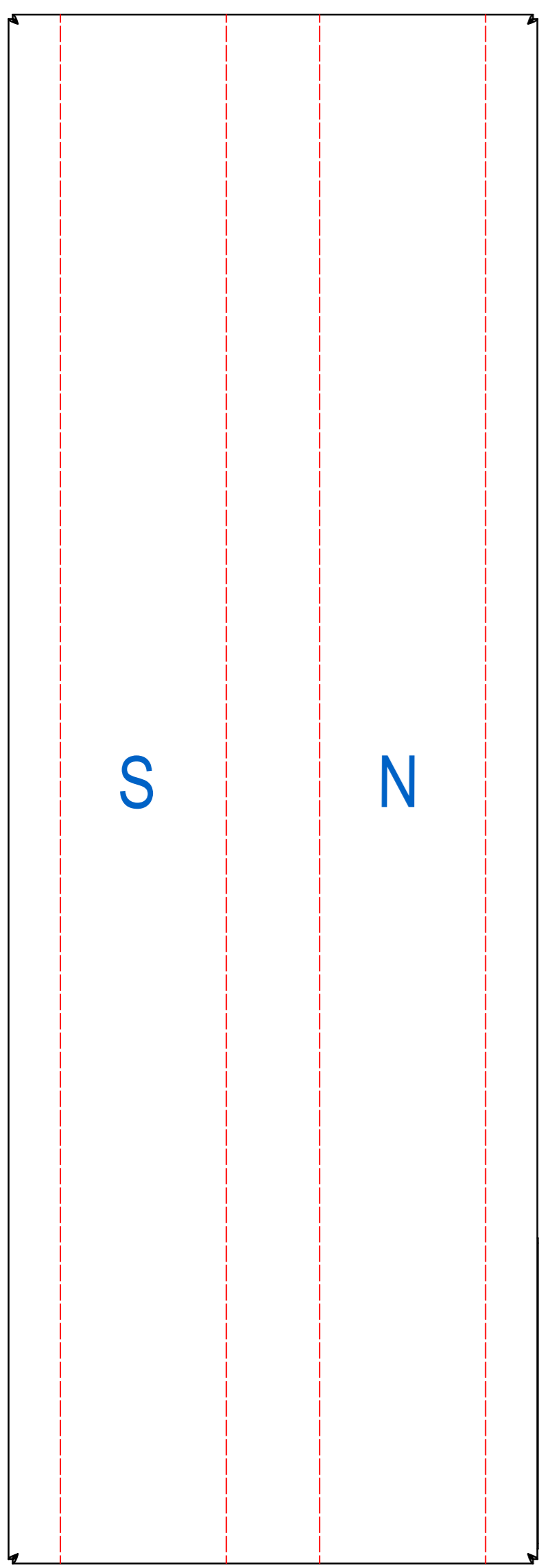


REV	DATE	BY	DESCRIPTION
-	19-2-2014	PB	NEW VAULT, NEW REVISION NOTHING CHANGED. OLD REV WAS B
A	4-1-2023	DK	SOURCE CODE ADDED, TYPE PLATE STICKER ADDED



ITEM	QTY	PART NUMBER	DESCRIPTION	Dimensions
2	1	E0156683	HRA-TYPE PLATE ETCH	
1	1	E0157140	HRA-WELD AND MOULD ASSY	

RAW MAT.	Quantity: 1	Material Number:	Material Description:	Length (mm):	Width (mm):
Sheet:	A2	Extra info:	General tolerance:	ISO 2768- mK	
Drawn:	PB	Weight (kg): 6,7	REINFORCED WATERTIGHT AISI	Drawn according: ISO268; ISO1101; ISO2553	
Date:	19-2-2014	Source:	MC-C	Status: Standard	
Spare part:	False	Quick search:	TBAA54	Customer reference number:	
Description:			HRA-F-102x44-AA-0300-R-W	Document number:	Doc.Rev: A
				Part number:	Rev: A
				TBAA030054	