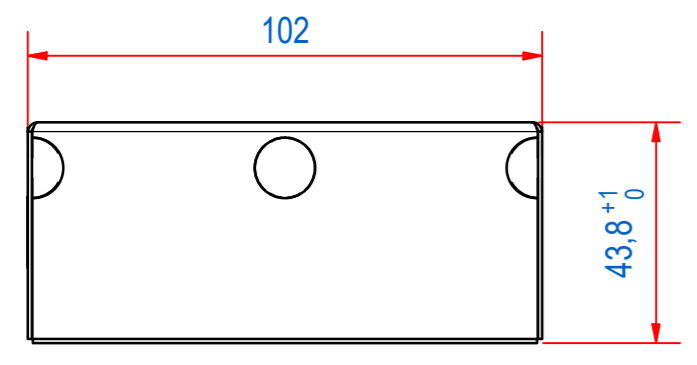
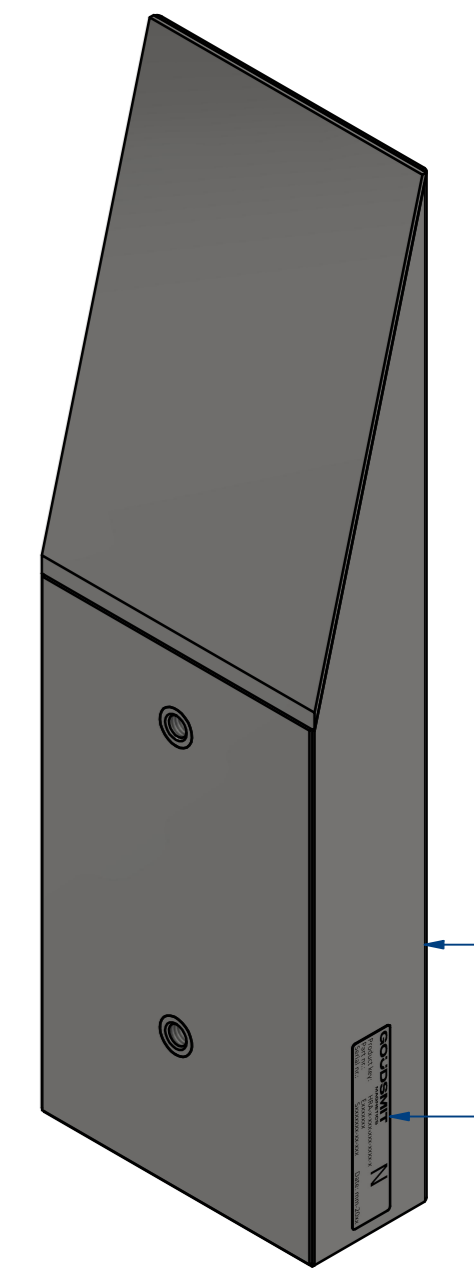
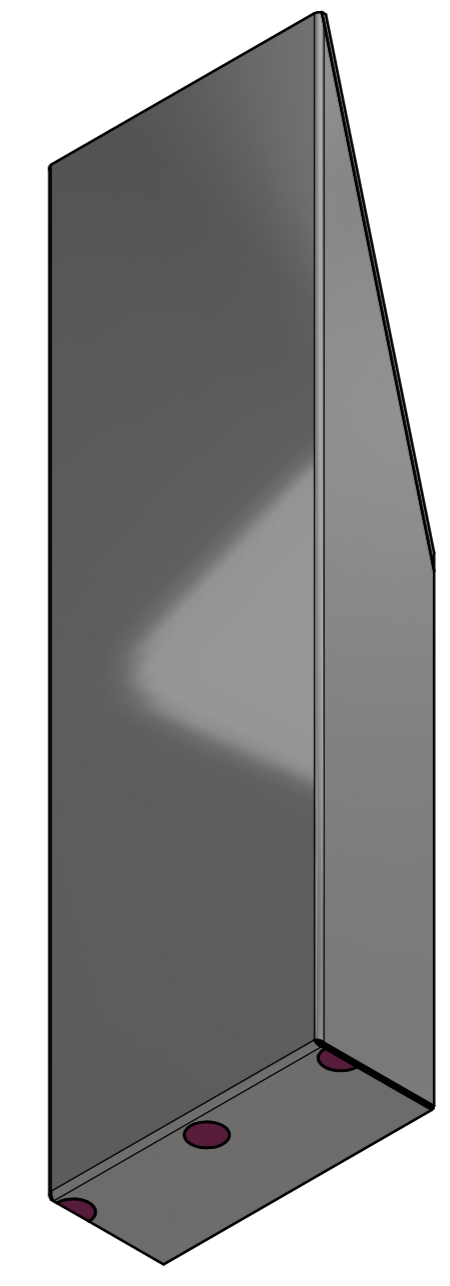
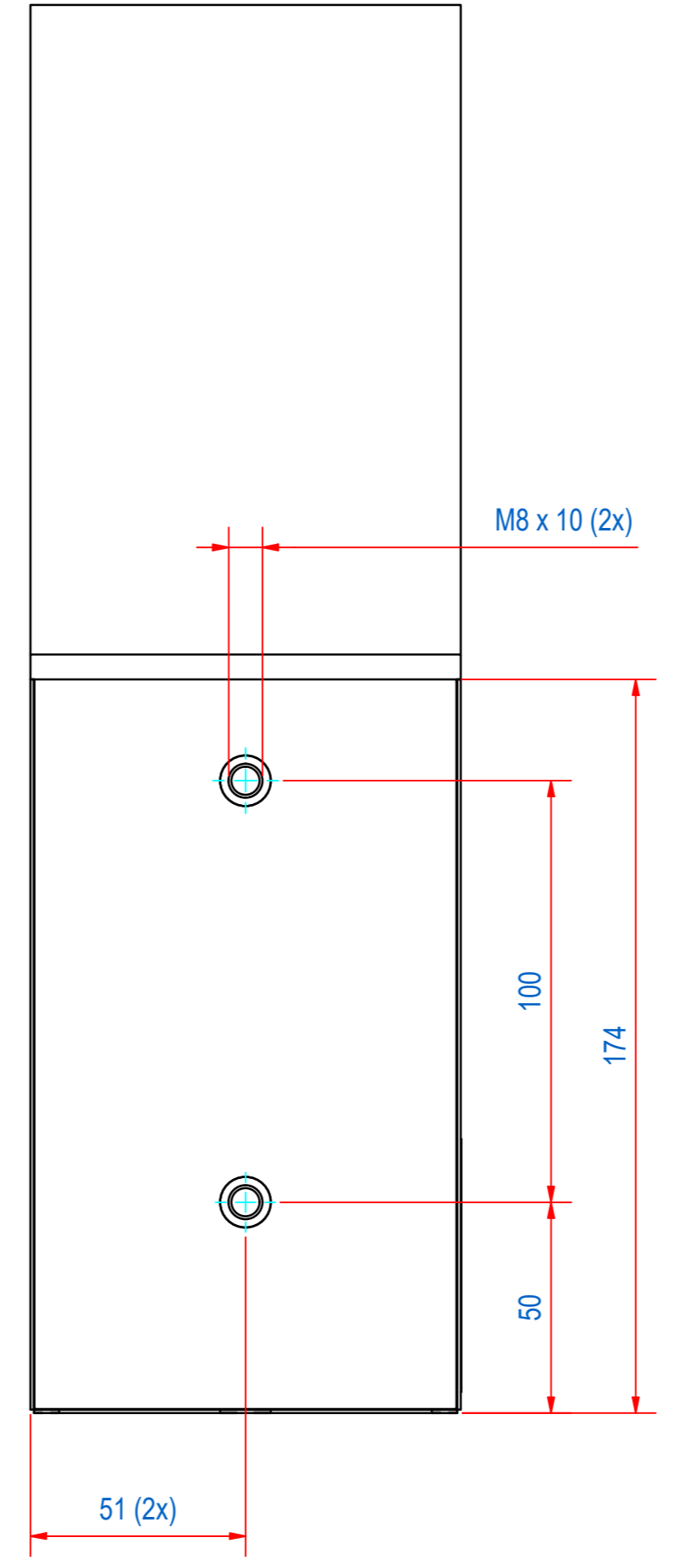
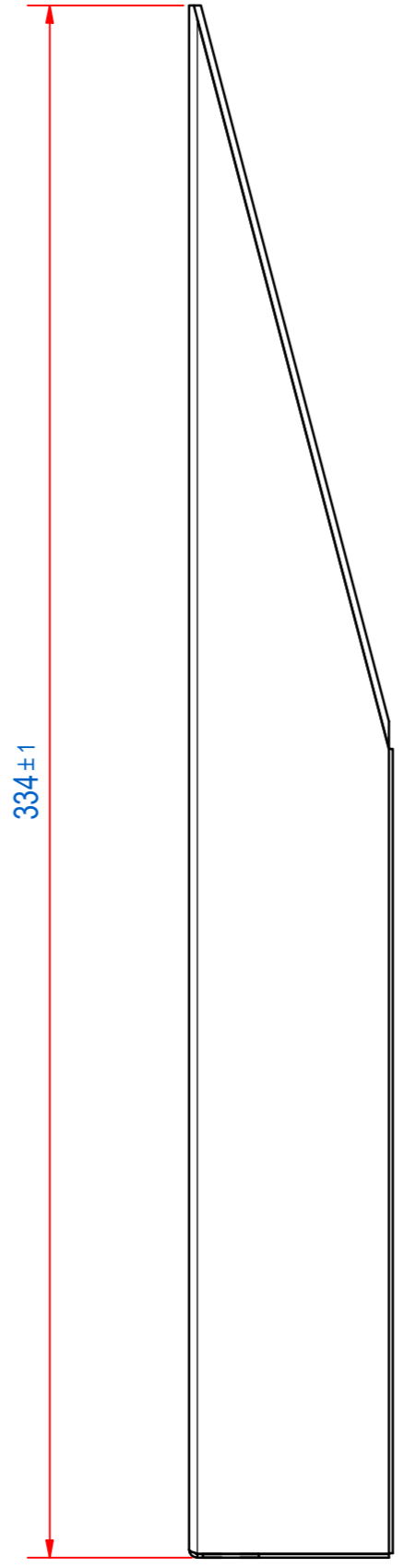
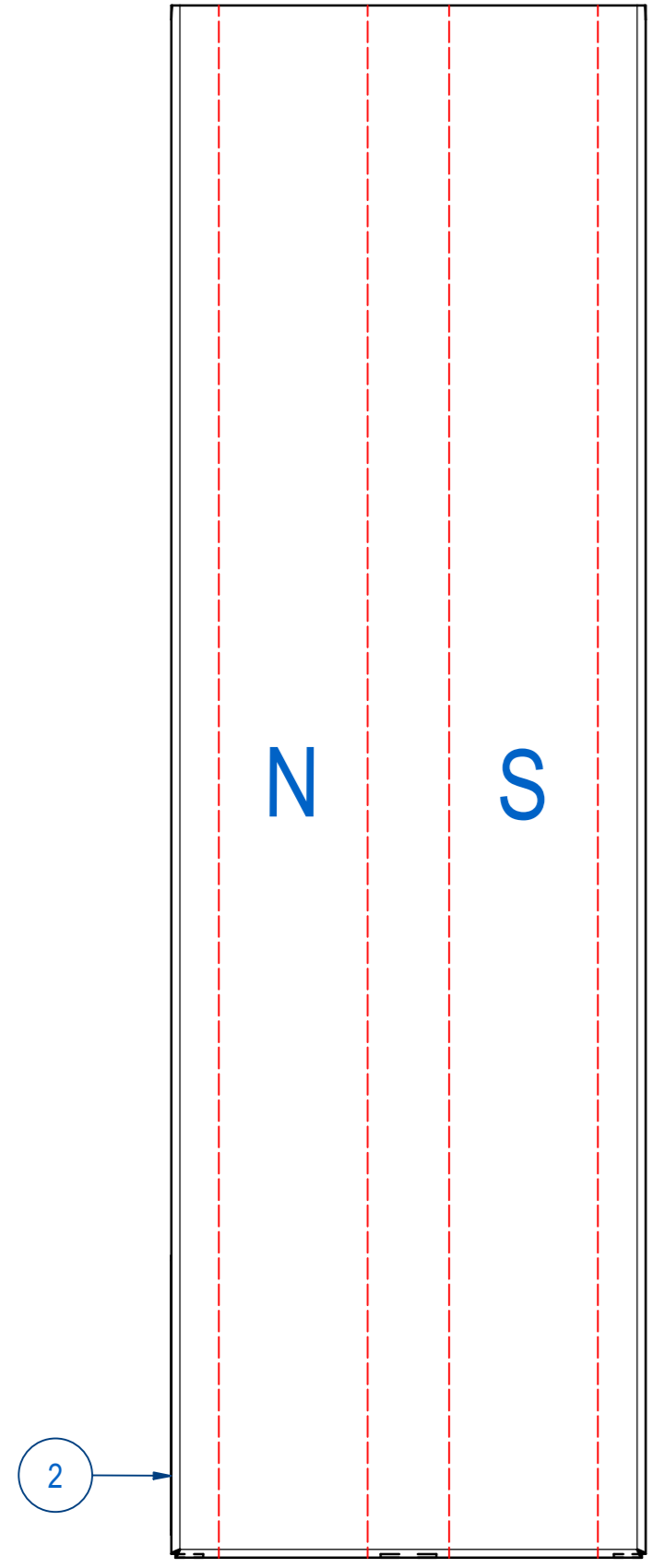


REV	DATE	BY	DESCRIPTION
A	23-11-2022	PB	E0156330 ADDED
B	18-1-2023	DK	ETCH AND SOURCE CODE ADDED, FILES DEMOTED
C	2-2-2023	DK	VIEWS UPDATED



ITEM	QTY	PART NUMBER	DESCRIPTION	Dimensions
2	1	E0156683	HRA-TYPE PLATE ETCH	
1	1	E0156330	HRA-WELD AND MOULD ASSY	
RAW MAT.	1			Length (mm) Width (mm)
Sheet:	A2	Extra info:	General tolerance:	ISO 2768- mK
Drawn:	PB	Weight (kg): 6,3	REINFORCED WATERTIGHT AISI	Drawn according: ISO268; ISO1101; ISO2553
Date:	8-10-2013	Source:	MC-C	Status: Standard
Spare part:	False	Quick search:	TBBB54	Customer reference number:
Description:			HRA-F-102x44-BB-0335-R-W	Document number: TBBB033554 Doc.Rev: C
				Part number: TBBB033554 Rev: C



© All rights reserved. Reproduction is not permitted without written permission of GOUDSMIT Magnetic Systems BV