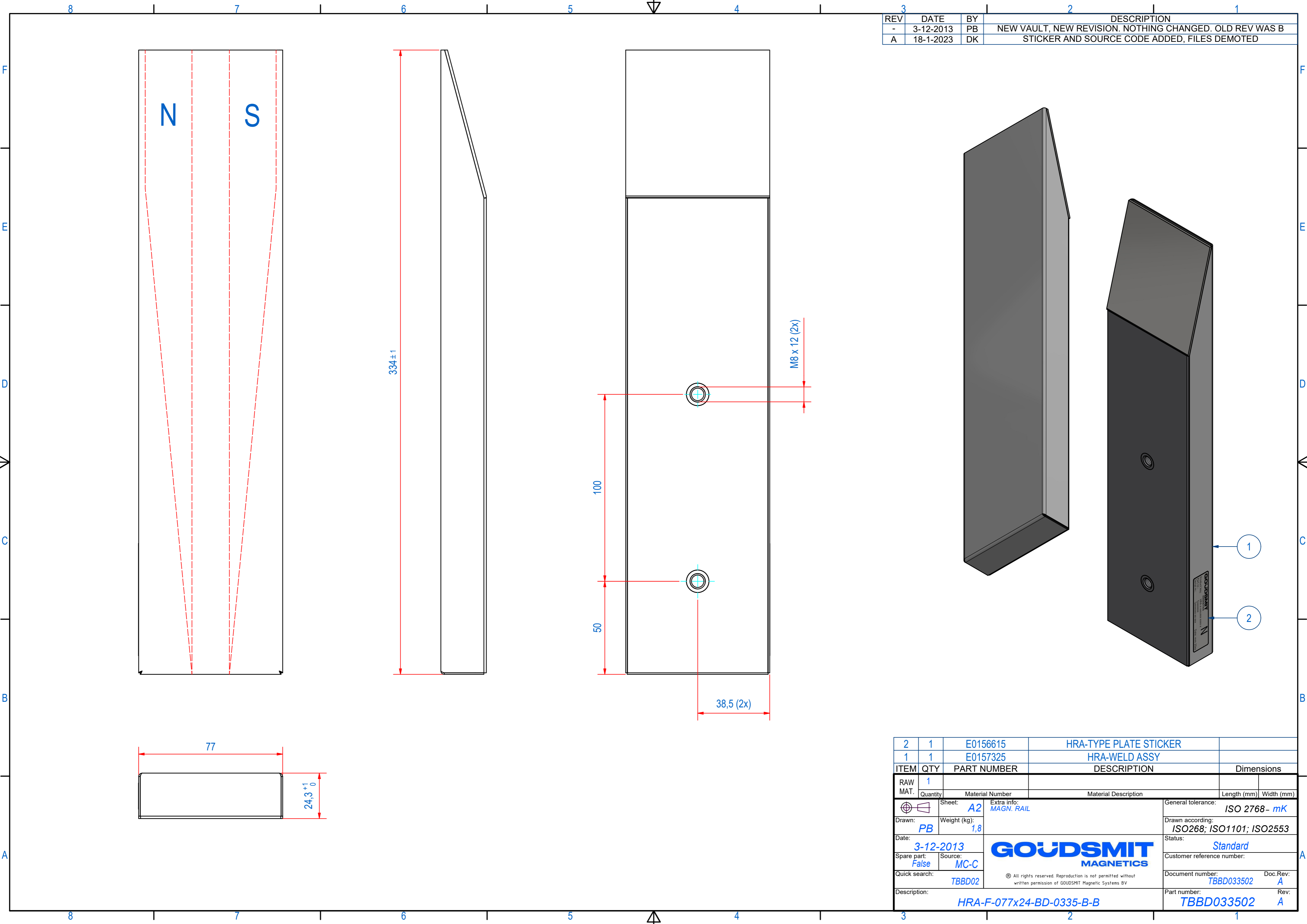


REV	DATE	BY	DESCRIPTION
-	3-12-2013	PB	NEW VAULT, NEW REVISION. NOTHING CHANGED. OLD REV WAS B
A	18-1-2023	DK	STICKER AND SOURCE CODE ADDED, FILES DEMOTED



ITEM	QTY	PART NUMBER	DESCRIPTION	Dimensions
2	1	E0156615	HRA-TYPE PLATE STICKER	
1	1	E0157325	HRA-WELD ASSY	

RAW MAT.	Quantity	Material Number	Material Description	Length (mm)	Width (mm)
1	1				

Sheet: <b>A2</b>	Extra info: <b>MAGN. RAIL</b>	General tolerance: <b>ISO 2768 - mK</b>
Drawn: <b>PB</b>	Weight (kg): <b>1,8</b>	Drawn according: <b>ISO268; ISO1101; ISO2553</b>
Date: <b>3-12-2013</b>	Source: <b>MC-C</b>	Status: <b>Standard</b>
Spare part: <b>False</b>	Quick search: <b>TBBD02</b>	Customer reference number:
Description: <b>HRA-F-077x24-BD-0335-B-B</b>		Document number: <b>TBBD033502</b> Doc.Rev: <b>A</b>
		Part number: <b>TBBD033502</b> Rev: <b>A</b>



© All rights reserved. Reproduction is not permitted without written permission of GOUDSMIT Magnetic Systems BV