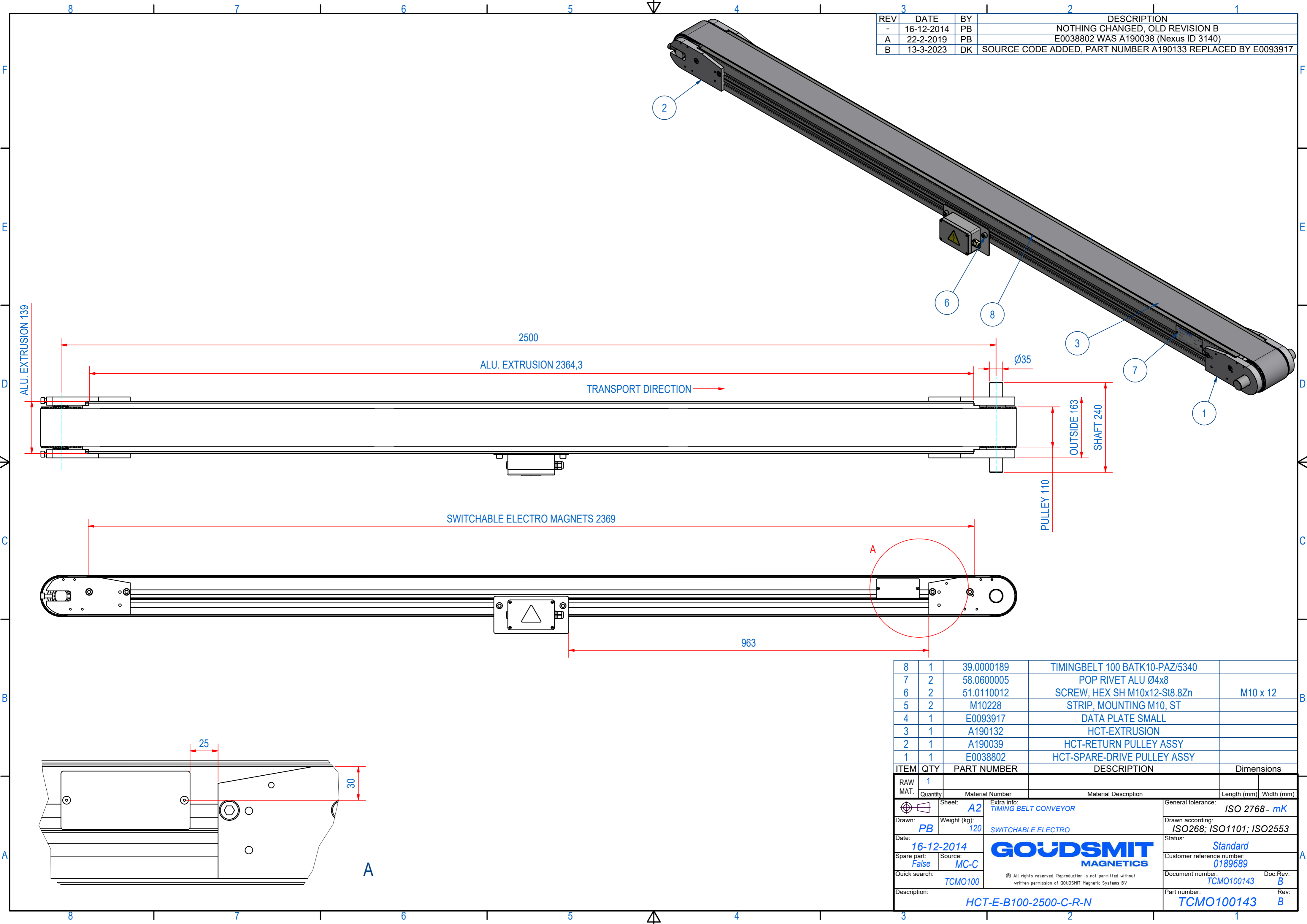


REV	DATE	BY	DESCRIPTION
-	16-12-2014	PB	NOTHING CHANGED, OLD REVISION B
A	22-2-2019	PB	E0038802 WAS A190038 (Nexus ID 3140)
B	13-3-2023	DK	SOURCE CODE ADDED, PART NUMBER A190133 REPLACED BY E0093917



ITEM	QTY	PART NUMBER	DESCRIPTION	Dimensions
8	1	39.0000189	TIMINGBELT 100 BATK10-PAZ/5340	
7	2	58.0600005	POP RIVET ALU Ø4x8	
6	2	51.0110012	SCREW, HEX SH M10x12-St8.8Zn	M10 x 12
5	2	M10228	STRIP, MOUNTING M10, ST	
4	1	E0093917	DATA PLATE SMALL	
3	1	A190132	HCT-EXTRUSION	
2	1	A190039	HCT-RETURN PULLEY ASSY	
1	1	E0038802	HCT-SPARE-DRIVE PULLEY ASSY	

RAW MAT.	Quantity	Material Number	Material Description	Length (mm)	Width (mm)
1	1				

Sheet: A2	Extra info: TIMING BELT CONVEYOR	General tolerance: ISO 2768 - mK
Drawn: PB	Weight (kg): 120	Drawn according: ISO268; ISO1101; ISO2553
Date: 16-12-2014	Source: MC-C	Status: Standard
Spare part: False	Quick search: TCMO100	Customer reference number: 0189689
Description: HCT-E-B100-2500-C-R-N		Document number: TCMO100143
		Doc.Rev: B
		Part number: TCMO100143
		Rev: B

