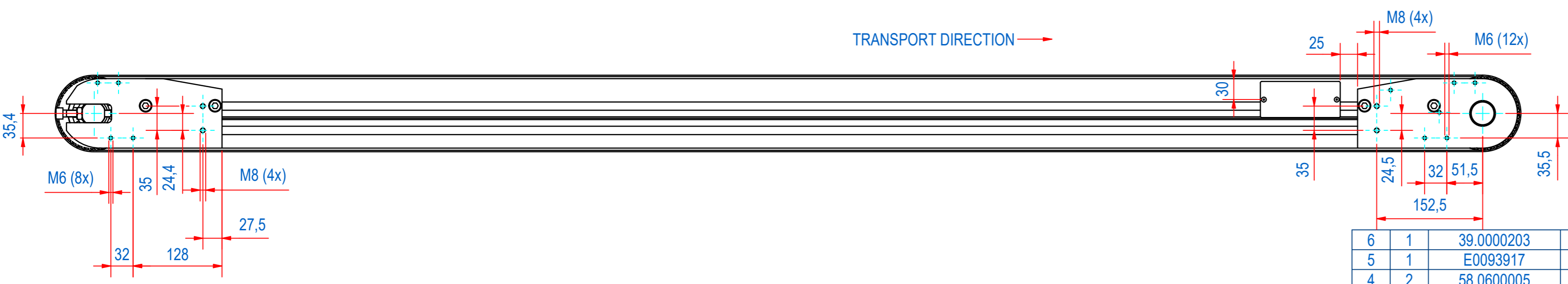
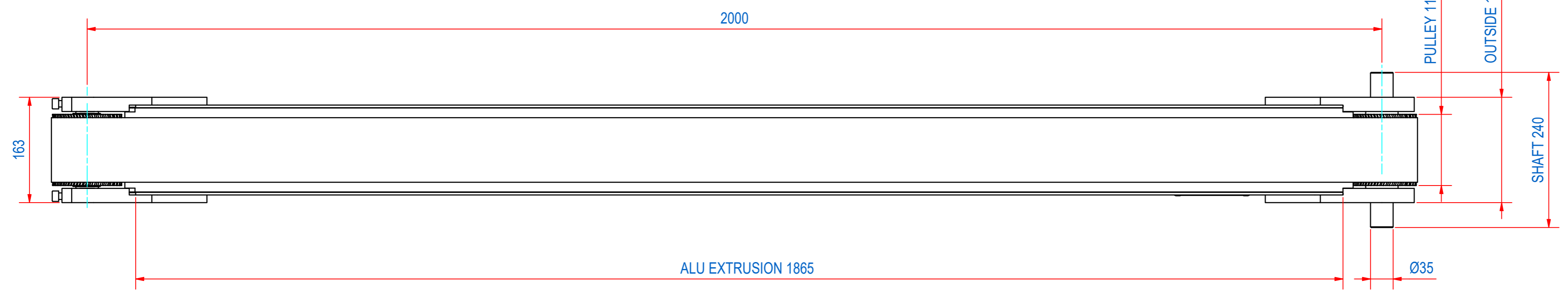
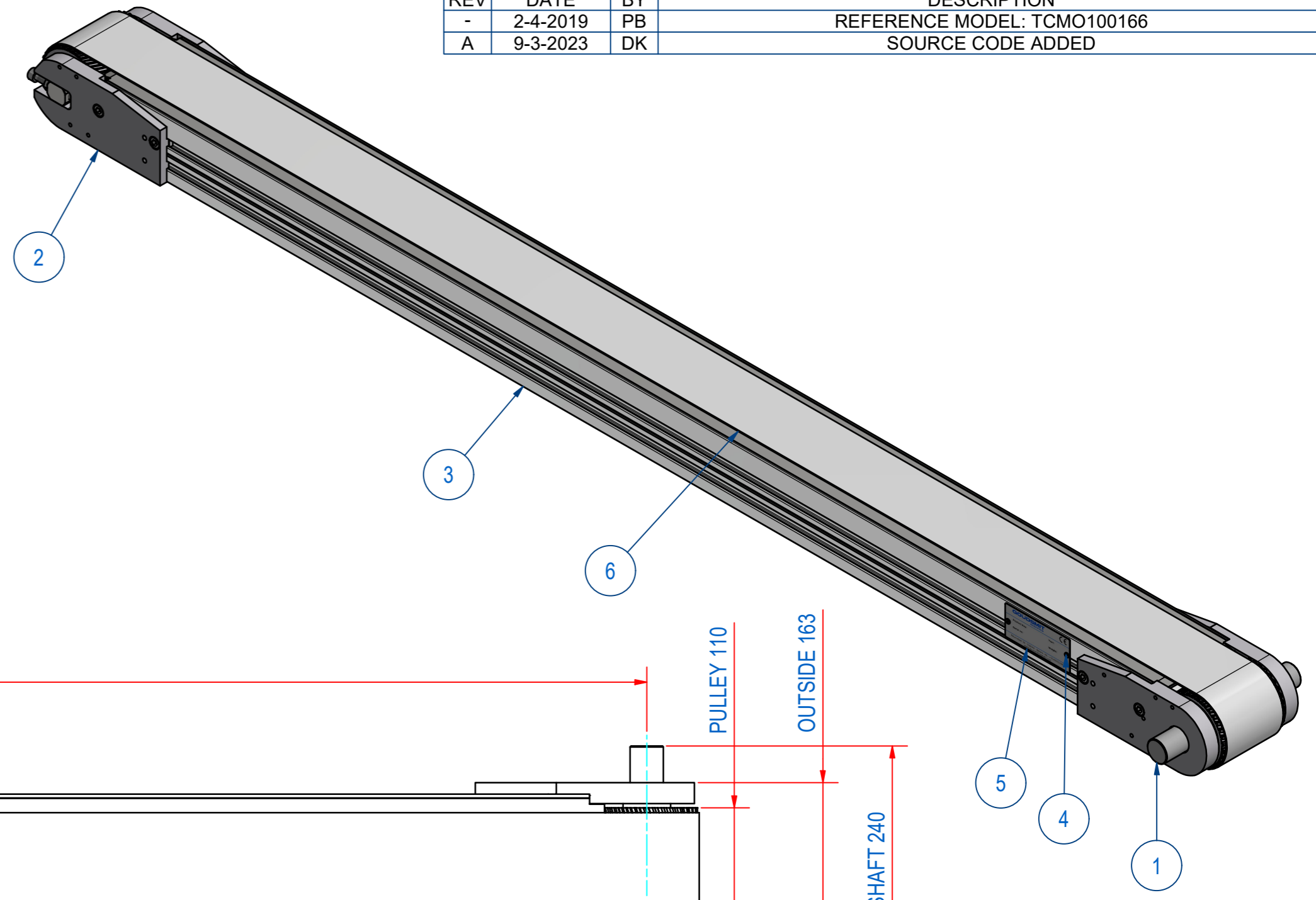


REV	DATE	BY	DESCRIPTION
-	2-4-2019	PB	REFERENCE MODEL: TCMO100166
A	9-3-2023	DK	SOURCE CODE ADDED



ITEM	QTY	PART NUMBER	DESCRIPTION	Dimensions
6	1	39.0000203	TIMINGBELT 100BATK10-PAZ/4340	
5	1	E0093917	DATA PLATE SMALL	
4	2	58.0600005	POP RIVET ALU Ø4x8	
3	1	E0113139	HCT-EXTRUSION L=1865	
2	1	A190039	HCT-RETURN PULLEY ASSY	
1	1	E0038802	HCT-SPARE-DRIVE PULLEY ASSY	

RAW MAT.	Quantity: 1	Material Number	Material Description	Length (mm)	Width (mm)
Sheet: A2		Extra info: TIMING BELT CONVEYOR		General tolerance: ISO 2768 - mK	
Drawn: PB		Weight (kg): 44		Drawn according: ISO268; ISO1101; ISO2553	
Date: 8-7-2019		Source: MC-C		Status: Standard	
Spare part: False		Quick search: TCMO100		Customer reference number:	
Description: HCT-F-B100-2000-C-N-N		© All rights reserved. Reproduction is not permitted without written permission of GOUDSMIT Magnetic Systems BV		Document number: TCMO100220 Doc.Rev: A	
		Part number: TCMO100220		Rev: A	