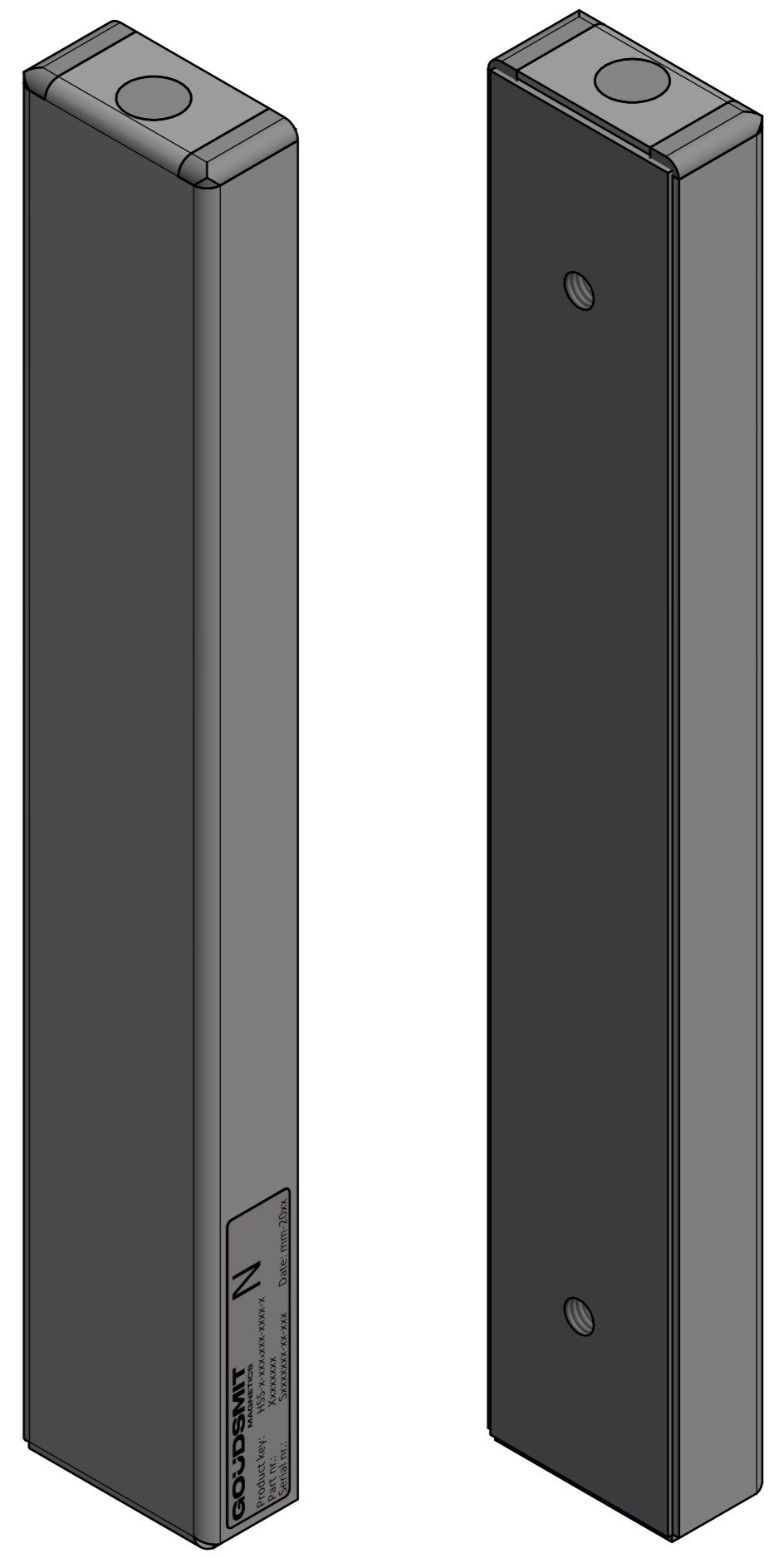
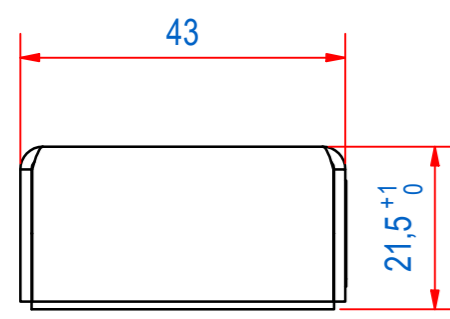
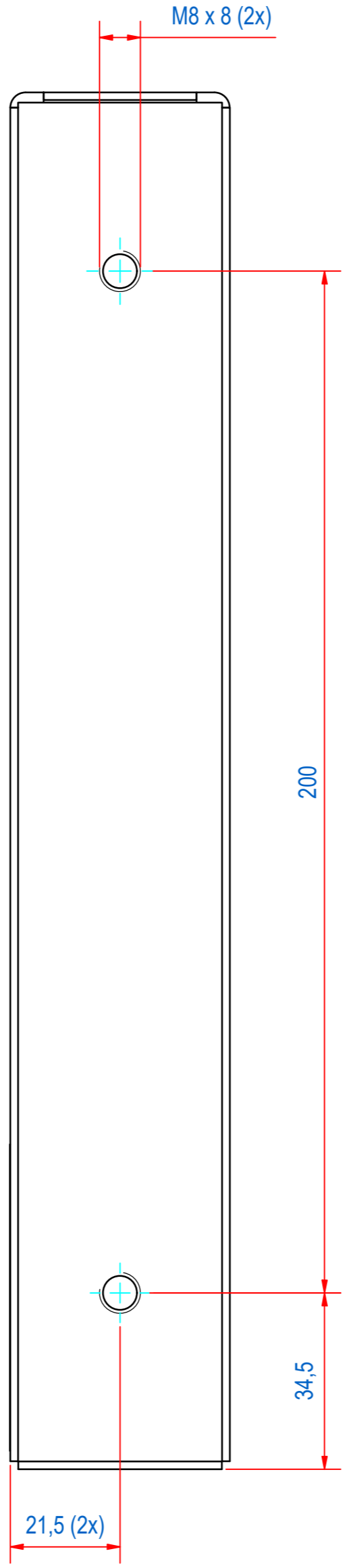
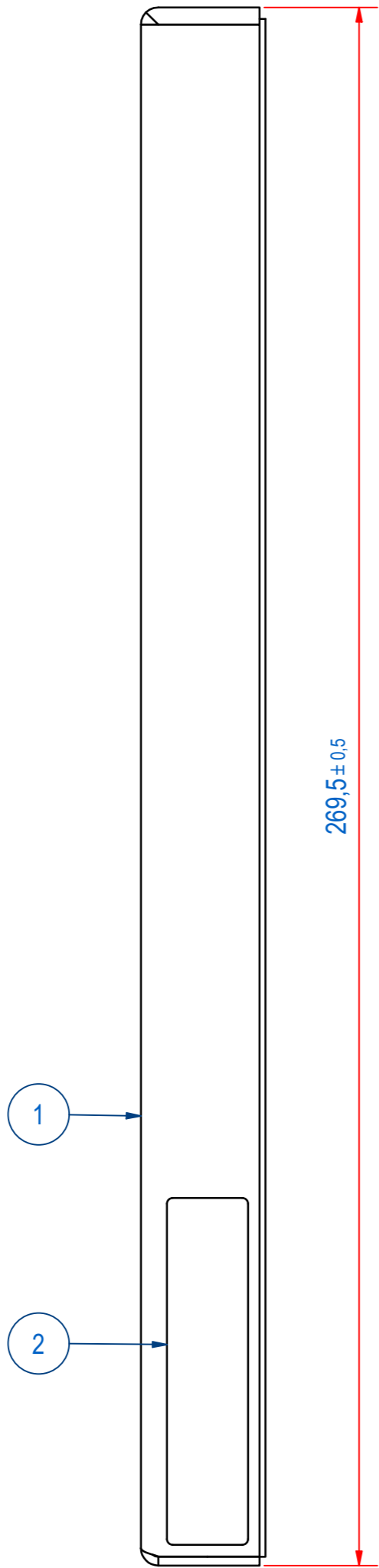
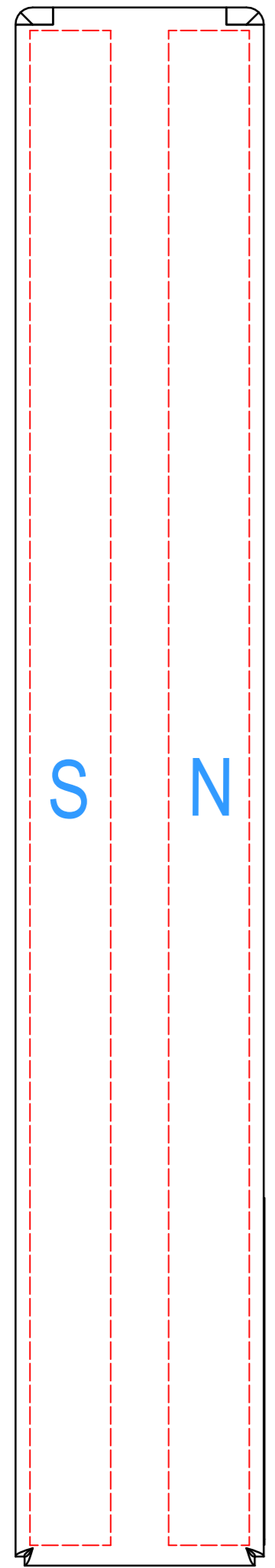


REV	DATE	BY	DESCRIPTION
-	25-6-2013	PB	NEW VAULT, NEW REVISION. ALL ITEMS WERE IN THIS DRAWING.
A	14-12-2022	DK	SOURCE CODE ADDED, ETCH TYPE PLATE ADDED
B	14-12-2022	DK	ETCH TYPE PLATE EXCHANGED WITH STICKER TYPE PLATE



ITEM	QTY	PART NUMBER	DESCRIPTION	Dimensions
2	1	E0156369	HSS-TYPE PLATE STICKER	
1	1	E0156403	HSS-WELD AND MOULD ASSY	
RAW MAT.	1			Length (mm) Width (mm)
Quantity		Material Number	Material Description	General tolerance: ISO 2768- mK
Sheet: A2		Extra info: SHEET SEPARATOR		Drawn according: ISO268; ISO1101; ISO2553
Drawn: PB		Weight (kg): 2,7		Status: Standard
Date: 25-6-2013		Source: MC-C		Customer reference number:
Spare part: False		Quick search: TGSP00		Document number: TGSP000270 Doc.Rev: B
Description: HSS-N-BA-043x022-0270-B		Part number: TGSP000270		Rev: B



© All rights reserved. Reproduction is not permitted without written permission of GOUDSMIT Magnetic Systems BV